

Features

- Advanced high cell density Trench technology
- Super Low Gate Charge
- Excellent CdV/dt effect decline
- 100% EAS Guaranteed
- Green Device Available

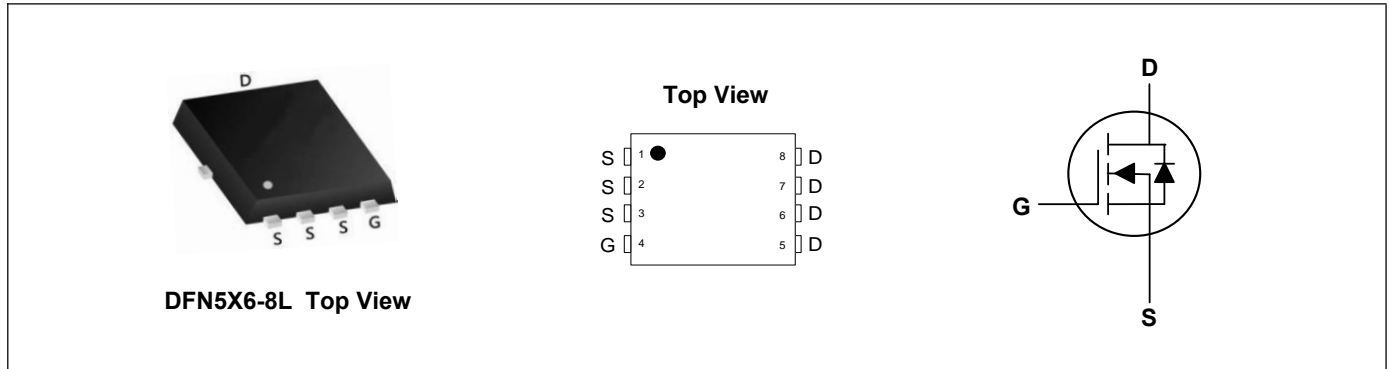
Applications

- High Frequency Point-of-Load, Synchronous Buck Converter
- Networking DC-DC Power System
- Load Switch

Product Summary



V_{DS}	150	V
I_D	80	A
$R_{DS(ON)}$ (at $V_{GS}=10V$)	11.5	m Ω



Absolute Maximum Ratings($T_A=25^{\circ}C$, unless otherwise noted)

Parameter	Symbol	Rating	Units
Drain-Source Voltage	V_{DS}	150	V
Gate-Source Voltage	V_{GS}	± 20	V
Continuous Drain Current ¹	I_D	80	A
Continuous Drain Current ¹	I_D	52	A
Pulsed Drain Current ²	I_{DM}	320	A
Single Pulse Avalanche Energy ³	EAS	550	mJ
Total Power Dissipation ⁴	P_D	160	W
Storage Temperature Range	T_{STG}	-55 to 150	$^{\circ}C$
Operating Junction Temperature Range	T_J	-55 to 150	$^{\circ}C$

Thermal Characteristics

Parameter	Symbol	Typ	Max	Unit
Thermal Resistance Junction-Case ¹	$R_{\theta JC}$	---	0.78	$^{\circ}C/W$

Electrical Characteristics (T_J=25°C, unless otherwise noted)

Parameter	Symbol	Conditions	Min	Typ	Max	Unit
Drain-Source Breakdown Voltage	BV _{DSS}	V _{GS} =0V, I _D =250uA	150	---	---	V
Static Drain-Source On-Resistance ²	R _{DS(ON)}	V _{GS} =10V, I _D =40A	---	10	11.5	mΩ
Gate Threshold Voltage	V _{GS(th)}	V _{GS} =V _{DS} , I _D =250uA	2	3	4	V
Drain-Source Leakage Current	I _{DSS}	V _{DS} =150V, V _{GS} =0V, T _J =25°C	---	---	1	uA
Gate-Source Leakage Current	I _{GSS}	V _{GS} =±20V, V _{DS} =0V	---	---	±100	nA
Forward Transconductance	g _{fs}	V _{DS} =5V, I _D =40A	---	58	---	S
Total Gate Charge	Q _g	V _{DS} =75V, V _{GS} =10V, I _D =40A	---	33	---	nC
Gate-Source Charge	Q _{gs}		---	14.5	---	
Gate-Drain Charge	Q _{gd}		---	8	---	
Turn-On Delay Time	T _{d(on)}	V _{DD} =75V, V _{GS} =10V, R _G =3Ω, I _D =40A	---	12.5	---	ns
Rise Time	T _r		---	3.8	---	
Turn-Off Delay Time	T _{d(off)}		---	14	---	
Fall Time	T _f		---	3.5	---	
Input Capacitance	C _{iss}	V _{DS} =75V, V _{GS} =0V, f=1MHz	---	2200	---	pF
Output Capacitance	C _{oss}		---	289	---	
Reverse Transfer Capacitance	C _{rss}		---	11.2	---	

Drain-Source Diode Characteristics

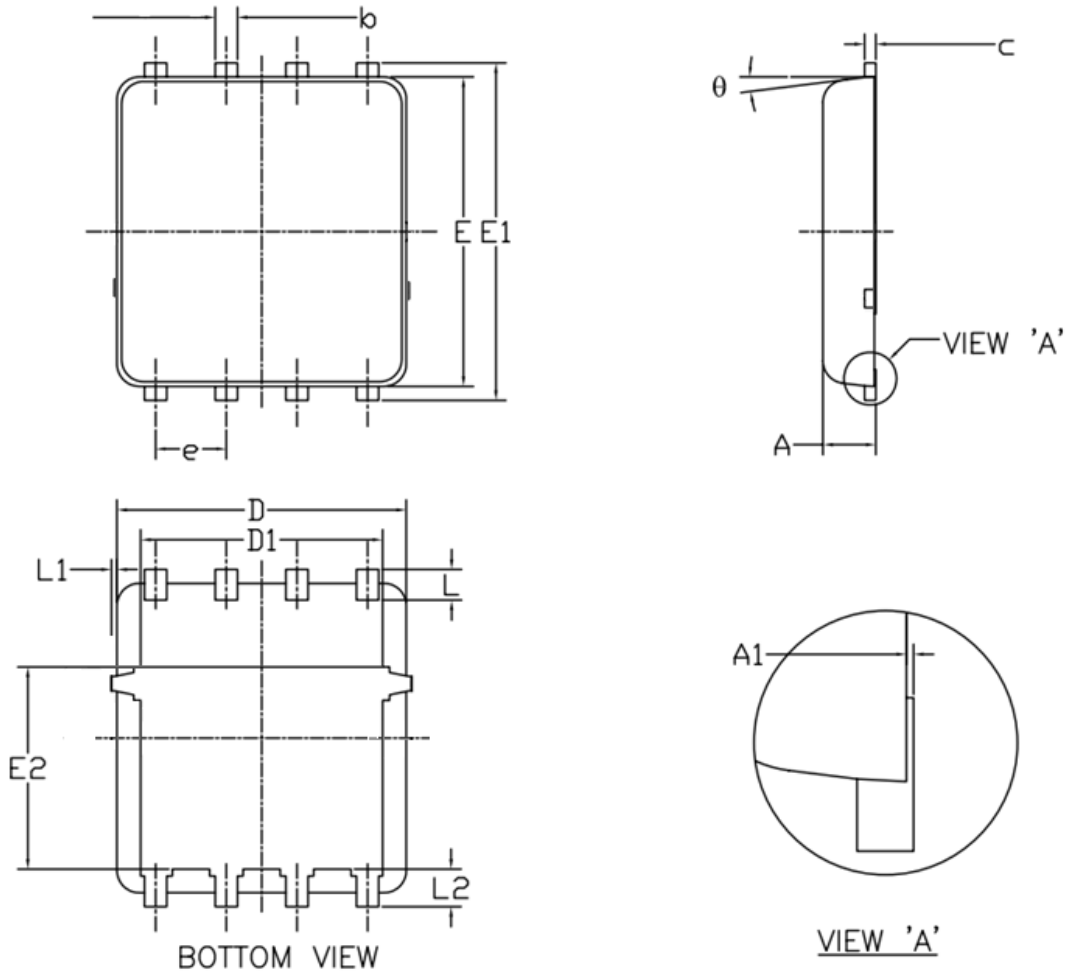
Parameter	Symbol	Conditions	Min	Typ	Max	Unit
Continuous Source Current ¹	I _S		---	---	80	A
Diode Forward Voltage ²	V _{SD}	V _{GS} =0V, I _S =40A, T _J =25°C	---	---	1.2	V
Reverse Recovery Time	t _{rr}	I _F =40A, di/dt=100A/μs, T _J =25°C	---	47	---	nS
Reverse Recovery Charge	Q _{rr}		---	55	---	nC

Note:

1. The data tested by surface mounted on a 1 inch² FR-4 board with 2OZ copper.
2. The data tested by pulsed, pulse width ≤ 300us, duty cycle ≤ 2%
3. The EAS data shows Max. rating. The test condition is V_{DD}=50V, V_{GS}=10V, L=0.5mH
4. The power dissipation is limited by 150°C junction temperature

Typical Characteristics

DFN5X6-8L Package Outline Dimensions



Symbol	Dimensions (unit:mm)			Symbol	Dimensions (unit:mm)		
	Min	Typ	Max		Min	Typ	Max
A	0.90	1.00	1.20	E1	5.90	6.10	6.35
A1	0.00	--	0.05	E2	3.38	3.58	3.92
b	0.30	0.40	0.51	e	1.27 BSC		
c	0.20	0.25	0.33	L	0.51	0.61	0.71
D	4.80	4.90	5.40	L1	--	--	0.15
D1	3.61	4.00	4.25	L2	0.41	0.51	0.61
E	5.65	5.80	6.06	theta	0°	--	12°